

TEAM TITANZ MEMBERSHIP

PROTECTING YOUR HOME AND YOUR WALLET



INSIDE

- ✓ Check Thermostat operation
- ✓ Check, Clean or change air filter if supplied

AIR HANDLER

- ✓ Check proper air flow
- ✓ Check humidifier/dehumidifier
- ✓ Clean Evaporator Coil
- ✓ Clean and treat algae build up in drain pan
- ✓ Vacuum & flush condensation line
- ✓ Check indoor blower motor amps
- ✓ Check heater circuit
- ✓ Check safety float switch for proper operation
- ✓ Visually check supply & return plenum

CONDENSER

- ✓ Check compressor amps
- ✓ Check capacitors
- ✓ Check pressures
- ✓ Clean condenser coil
- ✓ Wipe down system
- ✓ Check relays & contactors
- ✓ Check voltage at equipment
- ✓ Check proper cycling of unit
- ✓ Check and tighten electrical connections
- ✓ Check and test refrigerant level
- ✓ Visually Check Fan blade
- ✓ Visually check surroundings of condenser
- ✓ Inform customer on any issues found



CALL US TODAY!

(941) 600-6236

• Annual checkups can prevent over 70% of all system failures that requires repairs.

Our inspections are built to ensure the safety of your family and home all year-round.

MEMBERSHIP BENEFITS

Priority Status Scheduling

2 HVAC Maintenance Per Year for 1-System

Discount on Plumbing & A/C Repairs & Air Purification

Discount on Equipment Replacement

*Must be active member for minimum of 6 months for eligibility

No Emergency or After Hour Fees *Must Qualify For Emergency

Residential Annual Plumbing Inspection

Visually check *all plumbing, fixtures, and appliances *all hose bibs and main shut off valves

Complimentary Sewer Cam When Augur Is Needed To Clear Drain at Residence

Traditional Tank Style Water Heater Flush upon purchasing membership

ELITE MEMBERSHIP

Best Value	✓
\$369	✓
Yearly	
10% Off	
10% Off	
	✓
	✓
	✓
	✓

PRO MEMBERSHIP

\$179	✓
Yearly	✓
5% Off	
	X
	X
	X
	X
	X

* This value is not even including the 10% discount opportunities

Visit us online for more details or call our office today!

www.CallTitanz.com



PLUMBING & AIR CONDITIONING

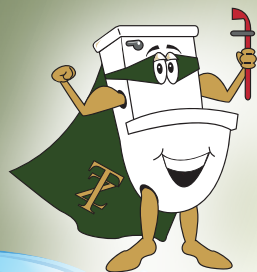
Lic# CFC1427407 & CAC1817586

H O N E S T Y A N D I N T E G R I T Y

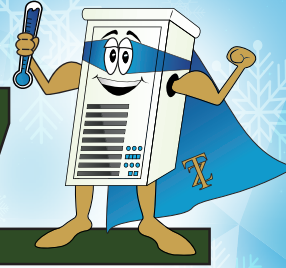
Did You Know....

- **Standardized plumbing can be traced back to around 3,000 B.C. when the Indus River Valley civilization used earthen plumbing pipes to provide transportable water and drain wastes.**
- **If you have a leaky faucet that drips twice per minute, you'll waste over a gallon of water in a week.**
- **The flushing toilet was invented by John Harrington in 1596, which is where we get the nickname "the John."**
- **We also call the toilet "the crapper" because of Thomas Crapper, who widely increased the popularity of it.**
- **Mario and Luigi (of the video game Super Mario Brothers) are plumbers.**
- **The word "plumber" comes from the Latin word "plumbum," which means "lead."**
- **In 1939, Al Moen invented the single-handle faucet that can control hot and cold water in just one turn.**
- **Manhole covers are circular because if they're turned sideways, they can't fall through their own opening.**
- **The toilet is flushed more times during the Super Bowl halftime than any other time during the year.**
- **75% of people prefer to position the toilet paper with the flap in the front (overhand) as opposed to in the back (underhand).**
- **The first air conditioner wasn't designed for comfort- In 1902, Willis Carrier, who worked for a publishing company, decided enough was enough with his paper from expanding and ink from running during the summertime.**
- **In 1903, the New York Stock Exchange became one of the first famous buildings to use air conditioning.**
- **The world's largest HVAC system is in the Holy Mosque www.zdnet.com/article/johnson-controls-lands-worlds-biggest-hvac-project-mecca in Saudi Arabia. To cool a space that sees up to 1 million visitors a month in a climate where temperatures frequently top 100 degrees, the system has 135,000 tons of refrigeration capacity.**

**Albert Einstein said
if he could do it all again,
he would be a plumber**



TITANZ



PLUMBING & AIR CONDITIONING

"All Your Service Needs"